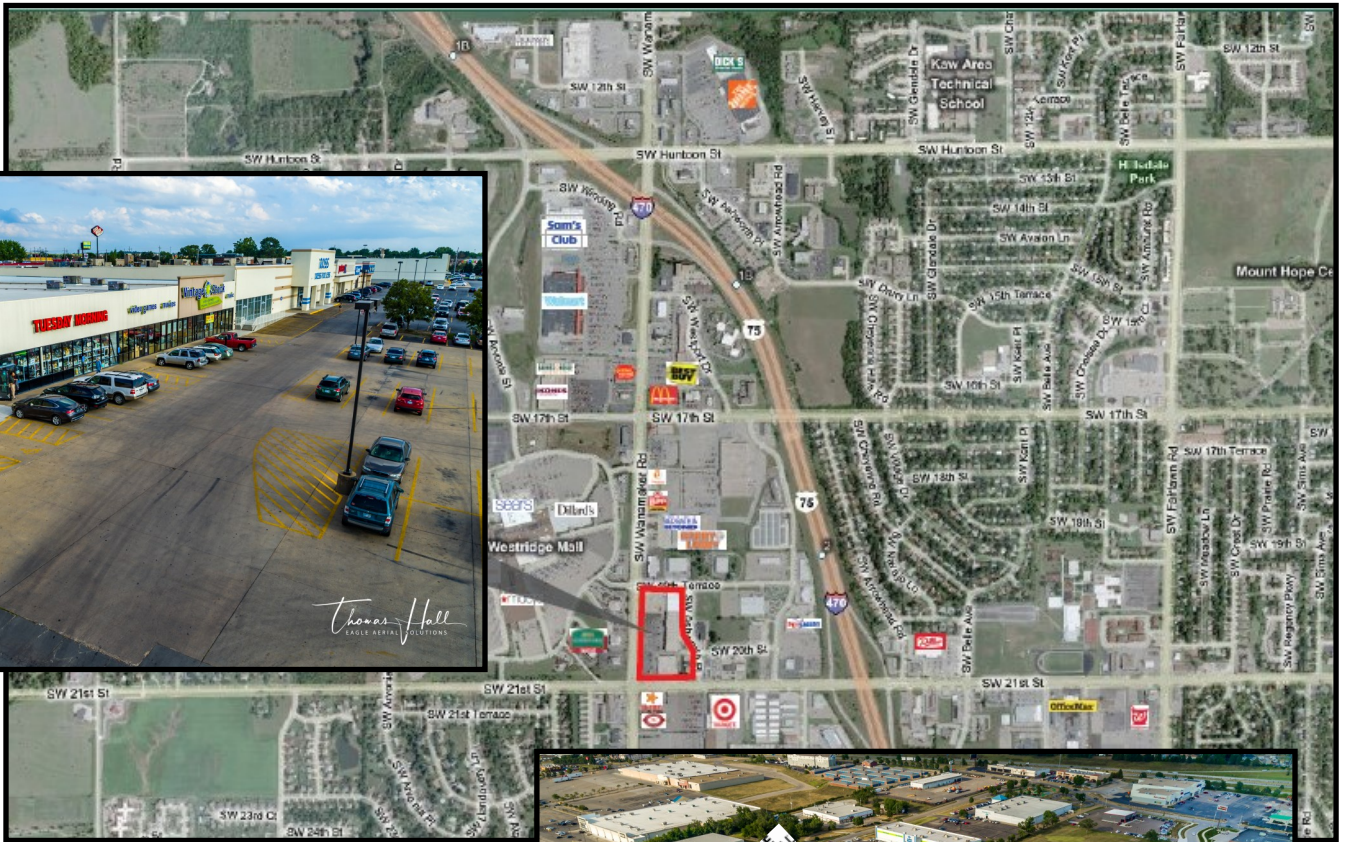


RETAIL SPACE AVAILABLE FOR LEASE

1930 SW Wanamaker Rd, Topeka, KS 66614



1,500– 3,000 lease opportunity

\$15 NNN

Shopping Center is 94% Occupied

Join great retailers:

Arron's, Ross, Shoe Carnival , Vintage Stock, Carpet Plus, & Mattress Hub

115,409 GLA shopping center

Located on the NE corner of 21st and

Traffic Counts:

- 21st Street: 27,645 cpd
- Wannamaker: 22,190 cpd

Randy Goldsmith | 785.221.1122 | randygoldsmith@k1realtyllc.com

VALUE ADDED COMMERCIAL REAL ESTATE SERVICES SINCE 1988

The information contained herein has been obtained from sources believed reliable. While K1 Realty llc does not doubt its accuracy, some of the information may need to be verified. K1 Realty llc makes no guarantee and warranty with regard to the property or this information.

