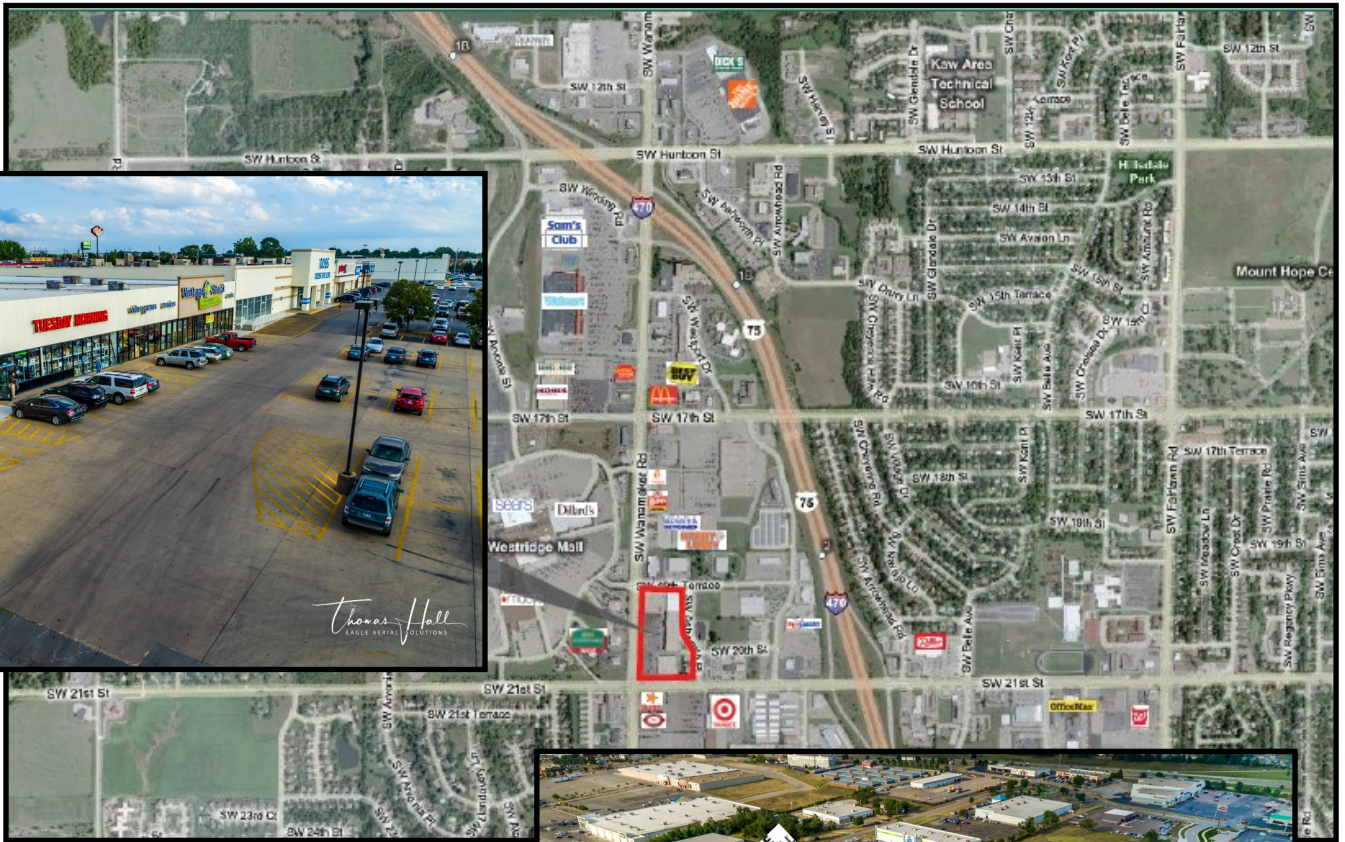


# RETAIL SPACE AVAILABLE FOR LEASE

1930 SW Wanamaker Rd, Topeka, KS 66614



7,500 SF lease opportunity

Join great retailers:

Ross, Shoe Carnival, Vintage Stock, Carpet Plus, & Mattress Hub

115,409 GLA shopping center

Located on the NE corner of 21st and Wanamaker in the heart of Topeka's regional retail shopping

2 blocks west of I-470

Traffic Counts:

- 21<sup>st</sup> Street: 27,645 cpd
- Wannamaker: 22,190 cpd

Randy Goldsmith | 785.221.1122 | [randygoldsmith@k1realtyllc.com](mailto:randygoldsmith@k1realtyllc.com)

VALUE ADDED COMMERCIAL REAL ESTATE SERVICES SINCE 1988

The information contained herein has been obtained from sources believed reliable. While K1 Realty llc does not doubt its accuracy, some of the information may need to be verified. K1 Realty llc makes no guarantee and warranty with regard to the property or this information.

